

enva

environment matters

# Business Overview



[enva.com](http://enva.com)



## Our business

Enva is a leading provider of recycling and resource recovery solutions, with locations across the United Kingdom and Ireland. With sustainability at the forefront of our proposition, we recover a broad range of hazardous and non-hazardous waste materials for re-use in manufacturing and energy conversion. We also provide a complete portfolio of industrial, water and waste water services. At Enva we are committed to recycling and resource recovery; it forms the basis of our business strategy and our values.

We support the life cycle of waste products to provide either a second life, such as the production of energy or, in many cases, closed-loop recycling solutions. Our dedication to developing new and innovative products and solutions and extending the life cycle of the world's resources is driving our business forward.

Whilst to many Enva is a relatively new brand, our constituent operations have been around for many years and have significant heritage in the UK and Irish recycling and resource management markets. As a result, we are fortunate to have a highly skilled and experienced workforce who are close to their markets and customers. Operating under a single brand enables us to realise the associated operational and commercial synergies for customers across our key markets.



39 facilities



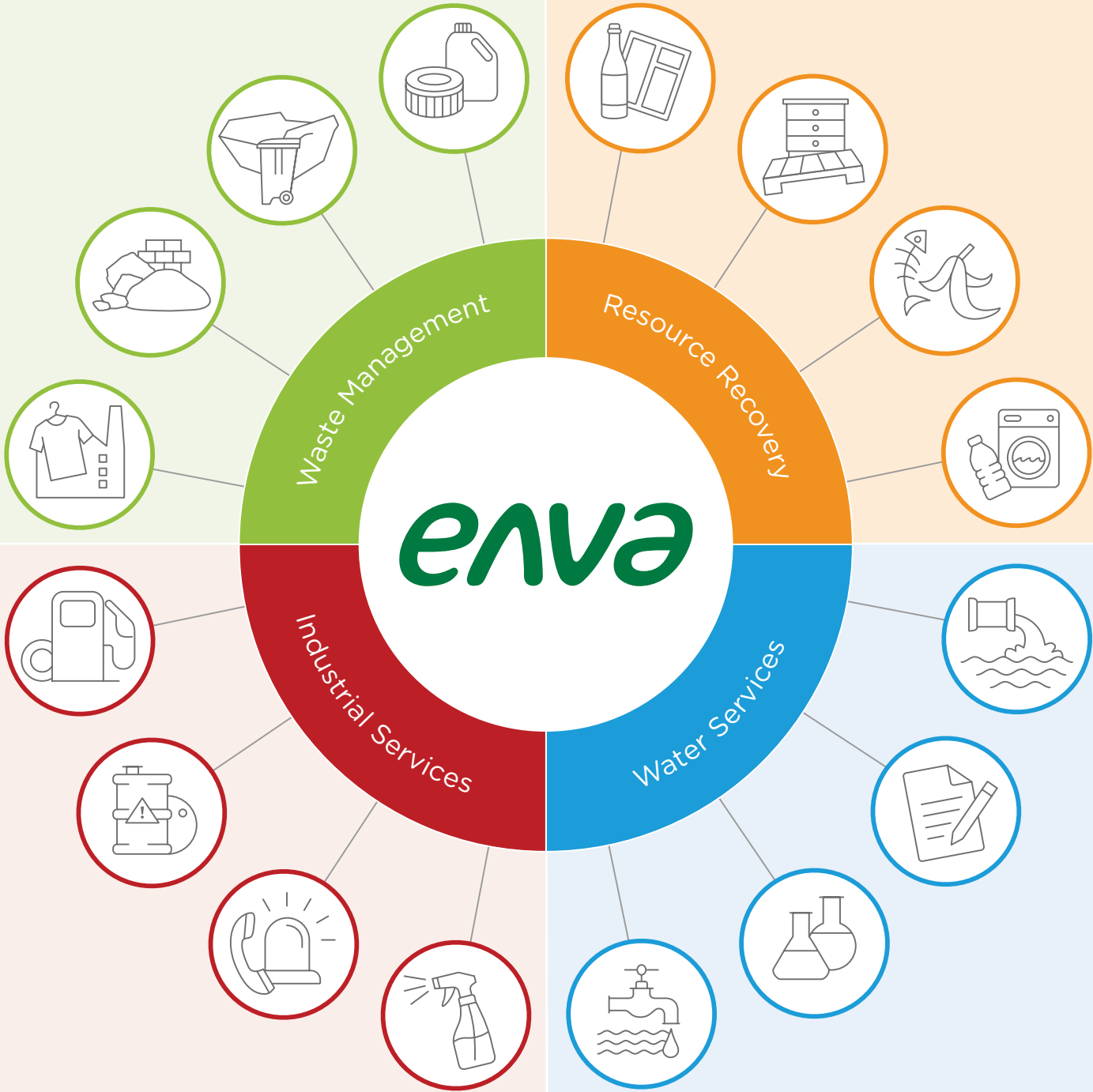
2000 employees



£392m turnover



# What we do



# Resource recovery forms the basis of our business strategy and our values



Recovering and recycling the waste we generate conserves our precious natural resources, reduces environmental impact and supports the development of a more circular economy. Enva converts as much waste as possible into new materials, products and energy sources, diverting it from landfill and helping our customers realise both commercial and environmental benefits.

We strive to provide closed-loop recycling solutions where waste materials are separated and recovered as secondary resources or used in the manufacture of new products. Where this is not possible, they are used as a fuel in the production of sustainable energy.

Whether it's producing recycled glass cullet for new bottles, aggregates for the construction industry or energy from waste oil, very little of what we collect is sent to landfill. Continually investing in research and development allows us to recover even more waste materials from a host of consumer, commercial and industrial sources. We don't simply collect waste - we transform it.

- Wood
- Oil
- Chemicals
- Glass
- Compost
- Plastic
- Aggregates
- Paper & Cardboard
- Metal
- Energy



### Wood

The waste wood we collect is inspected, segregated and then manufactured into a range of award-winning products which includes animal bedding, feedstock for panel board and high quality fuel for the biomass industry in both the UK and Europe.

### Oil

Waste oil is tested, treated and processed at our licenced facilities. We produce used lubricating oil (ULO) for re-refining back into base lubricants, supporting the circular economy.

We also produce processed fuel oil (PFO) for use as a high quality fuel in the asphalt industry, industrial driers, power stations, large boilers and furnaces and as a low sulphur alternative for bunkering oil in ships.

### Chemicals

We securely collect and treat waste chemicals from industrial processes, recovering as much as possible.

### Glass

Glass is the perfect circular economy material as it is 100% and endlessly recyclable. Enva processes up to 100,000 tonnes of cullet per annum for the glass manufacturing industry.

### Compost

We recycle green and food waste to produce a nutritious, high grade compost used across a multitude of applications including farming, golf courses, mine reclamation and tree planting.

### Plastic

Enva manages a significant volume of plastic and WEEE, from small household electrical appliances to larger items such as fridges. Much of this material is then further processed to produce a range of recycled plastic compounds suitable for extrusion or injection moulding.

### Aggregates

Enva recycles and supplies aggregate products for a variety of applications such as site restoration and road building.

### Paper & Cardboard

Using recycled fibre in the manufacture of paper and cardboard conserves energy and helps reduce pollution. Recycled paper and cardboard is supplied to either paper mills or packaging manufacturers.

### Metal

Virtually all metals can be recycled and whilst the process may vary, recycling generally produces metals of equivalent quality. We recycle a wide range of ferrous and non-ferrous metals from cans and tins through to scrap metal, domestic appliances and construction waste.

### Energy

Enva produces a range of sustainable waste derived fuels from recovered resources that can't be recycled back into their original state. These include biomass, oil, refuse derived fuel (RDF) and solid recovered fuel (SRF).

## Setting new standards in waste collection and management



From one-off collections to Total Waste Management solutions, our decades of experience and dedication to our customers has seen us set new industry standards.

We operate a diverse and fully-owned fleet of state-of-the-art collection vehicles, designed to ensure the safe collection and transportation of all general, specialist and hazardous waste materials.

Recycling and recovering as much of the material that we collect as possible, maximises the environmental and commercial benefits and keep landfill disposal to a minimum. Partnering businesses to deliver a fully compliant and cost-effective service with recovery at its heart is an enabler for modern organisations to meet their commercial and sustainable aspirations.

Our Total Waste Management portfolio of services delivers solutions and benefits across a wide range of industries and sectors:

- Commercial
- Industrial & Manufacturing
- Construction
- Engineering
- Education
- Public sector
- Retail
- Automotive
- Leisure



### **Hazardous & Specialist waste**

Hazardous waste can be highly complex and hugely varied which requires it to be managed safely and to the highest environmental standards. As with all waste types, our focus is on recycling and recovery through new and innovative processes. If waste cannot be recycled or recovered it will be treated to ensure it can be disposed of safely and compliantly. Whether it's WEEE (waste electrical and electronic equipment recycling), fridges, oils, contaminated soil, clinical waste or chemicals, our experience and expertise means a solution is always available.

### **General waste**

Enviro delivers the highest level of general waste services across all industries and sectors, supplying a range of container types and collection options. Once collected, all waste is taken to one of Enviro's specialist facilities ensuring that as much as possible is recycled or recovered. Waste that cannot be recovered is often used to create a fuel for the production of sustainable energy.

### **National coverage**

Enviro provides third-party collection services in areas that cannot be directly met by our own fleet. Our suppliers are regularly audited to ensure that they share our values and meet our service, environmental and health & safety standards. This ability to deliver consistently high quality services has supported long-term relationships with some of the UK's largest and best-known brands across a range of sectors.

### **Skip hire**

Our national skip hire service provides a flexible, reliable, cost-effective and environmentally responsible method of dealing with construction, house clearance or garden waste. Customers can order skips online via our website.

# Keeping the wheels of industry turning with a range of specialist services



Enva provides a range of expert services to industry and municipalities across the UK & Ireland.

We solve complex industrial cleaning and decontamination problems for our customers using the latest equipment and fleet, highly trained personnel and expert project management.

Our services are designed to minimise downtime and business disruption whilst protecting against health and environmental issues. Tailored to the individual needs of our customers and the specifics of the site, we provide clear operating plans and we carefully risk assess every project.

The foundation of our business, 'resource recovery', remains a focus throughout. Wherever possible, we recycle and recover the by-products of industrial cleaning.

In addition to our industrial services, Enva also supplies a range of bespoke biological and chemical cleaning products to distributors and industrial customers.

Services:

- Industrial tank and confined space cleaning
- Forecourt services & interceptors
- Emergency response
- Drainage services
- Contaminated land
- Site restoration
- Decontamination





### **Industrial tank and confined space cleaning**

Complete tank cleaning with comprehensive site safety and emergency procedures, delivered by experts. Our experienced personnel have full confined space training and can also work under air as required. We also provide a range of automated/non man entry cleaning services.

### **Forecourt services & interceptors**

Maintaining safe, clean and efficient fuel forecourts and garages is essential. Enva provides a full range of forecourt services and interceptor cleaning solutions to ensure compliance with petroleum licences and environmental standards.

### **Emergency response**

Enva provides 24/7 emergency spill response for oil-related incidents and chemical emergencies. With highly trained personnel and specialist equipment we quickly, safely and compliantly minimise the environmental risks and financial costs of incidents.

### **Drainage services**

Our expertise and state-of-the-art equipment allow us to digitally survey, clear and repair drainage and pipe networks. We also efficiently remove, transport and treat drainage waste. Our services support compliant drainage networks and guard against potential health and environmental hazards.

### **Contaminated land**

We treat and recover contaminated soils across the UK and Ireland. Our facilities can accept soils and sludges containing a wide range of contaminants. Soil samples are taken for analysis and classified as hazardous, non-hazardous or inert. Based on the classification, our experts can deliver the appropriate treatment or recovery process.

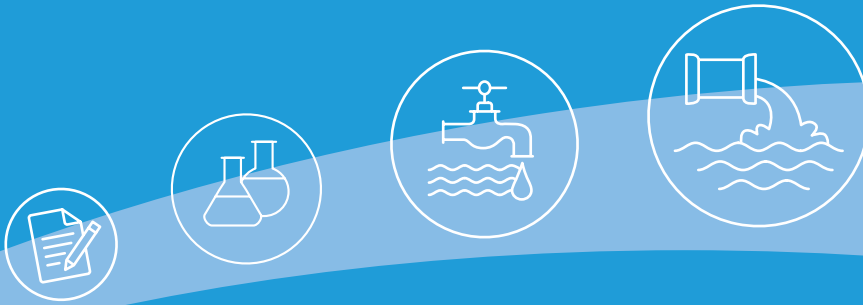
### **Site restoration**

Enva deliver a range of land restoration projects, using recycled organic materials and soils or in situ treatment to reclaim derelict land and restore the soil to return the land to a productive use.

### **Decontamination**

We offer a full range of hazardous and non-hazardous site decommissioning and decontamination services including sites that are contaminated with chemicals, acids and hydrocarbons. Waste is treated at our licensed facilities to minimise any environmental impact. We can also offer specialised pharmaceutical decommissioning and decontamination.

# Providing unique water and waste water solutions to our customers



Clean and safe fresh water is a basic requirement for all.

Enva provide a full spectrum of water and waste water services including treatment solutions, equipment, chemicals, lab services, monitoring services, sludge treatment and drainage network services.

Enva has a proven track record of servicing industrial, food and beverage, pharmaceutical and municipal customers across Ireland and the UK and diagnosing and resolving operating issues across the whole water treatment and delivery network. We provide both technical and managerial expertise to effectively deliver on short-term projects or longer-term strategic partnerships.

Our industrial and municipal customers use our expert services to ensure that they can operate efficiently and cost-effectively within a stringent regulatory environment.

We provide comprehensive testing services for a range of chemical and microbiological contaminants at our accredited laboratories, ensuring that final effluent or potable water is fully compliant.

- Lab services
- Disinfection
- Filtration
- Bespoke chemicals
- FOG removal
- Odour abatement
- Sludge management
- Surveying services
- Drainage services



### **Drinking water**

Our expertise and product range helps drive cost-effective, efficient water treatment plants while ensuring potable water supplies meet regulatory requirements.

### **Waste water**

Enva offer expert services and products across the entire municipal and industrial waste water treatment process, from the reception of waste waters right the way through to final treated effluent. Our customers benefit from this deep knowledge and product range, backed up by our comprehensive and fully accredited water labs.

### **Laboratory services**

Our experienced team of scientists work in partnership with customers to understand and diagnose operating issues and deliver tailored solutions for a wide range water treatment problems. Our fully accredited labs also offer comprehensive monitoring and testing services for raw water, potable water and waste water.

### **Bespoke chemicals**

Selecting the correct chemical product to optimise waste water treatment processes requires an in depth knowledge of the chemistry involved. Our team combines this expertise, years of experience and cutting-edge technology to produce the right solution for every situation.

### **Network surveys**

Ensuring drainage systems work effectively is key to minimising downtime and protecting against health and other environmental issues. We support efficient drainage networks and guard against potential health and environmental hazards, meaning they are fully operational and compliant.

### **Sludge management**

We collect, treat and recover hundreds of thousands of tonnes of waste water treatment sludges each year. We also manage the sludge generated from the treatment of over a billion litres of drinking water annually. Our sludge services include the compliant transport to our licensed facilities where it is processed, treated and recovered.

**enva**

For further information please contact  
**[marketing@enva.com](mailto:marketing@enva.com)**

**[enva.com](http://enva.com)**